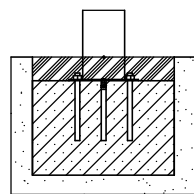
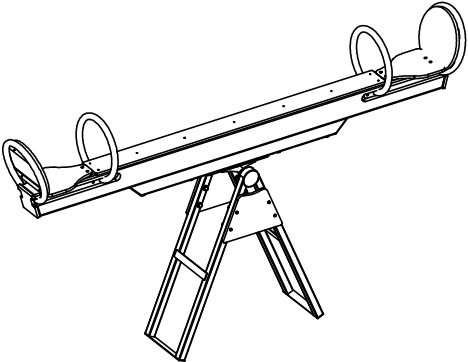
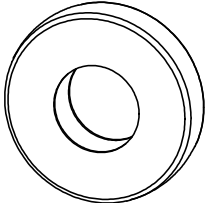
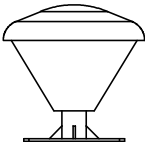
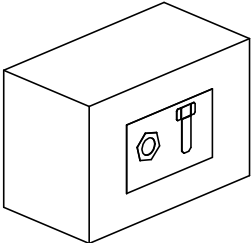


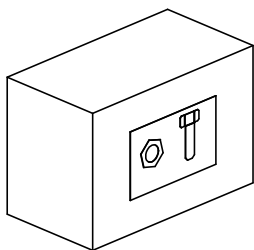
8013N



8013F


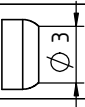


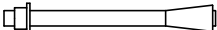

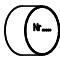
# 8013

NR	ELEMENT	8013N	8013F
E1		1	1
E2		2	
E3			2
E4		1	1



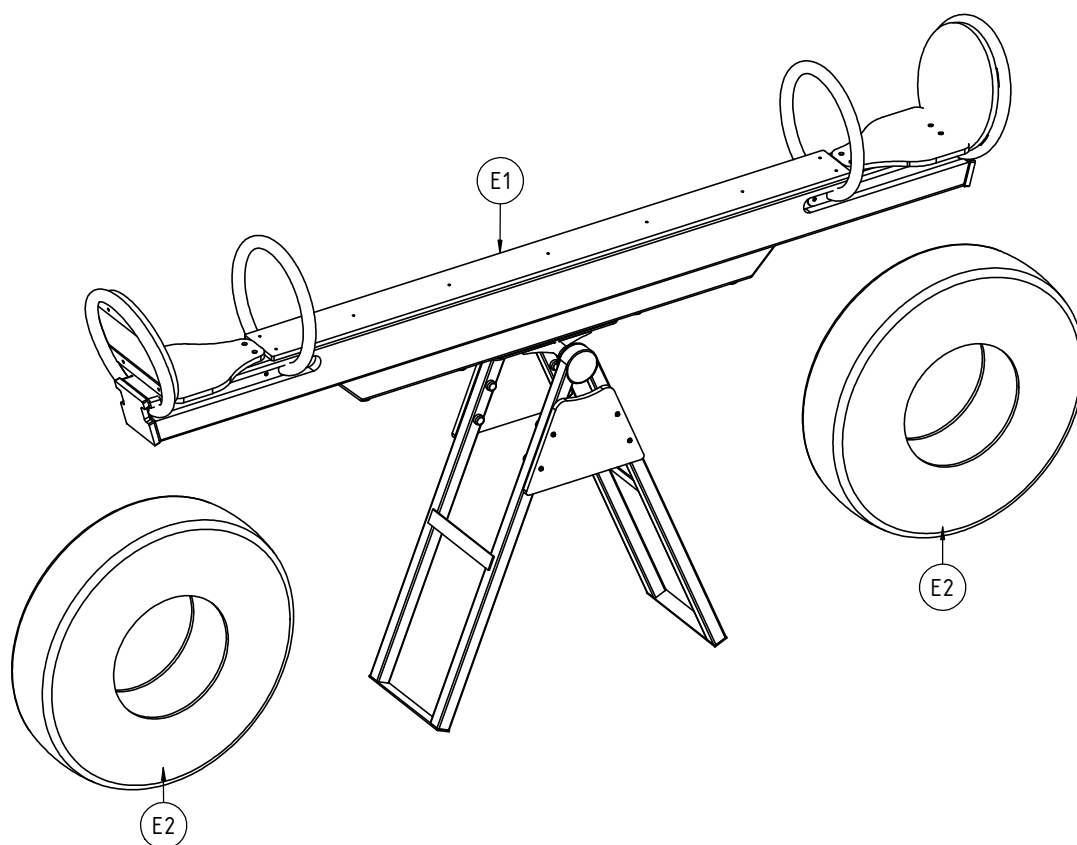
8013N

8013F

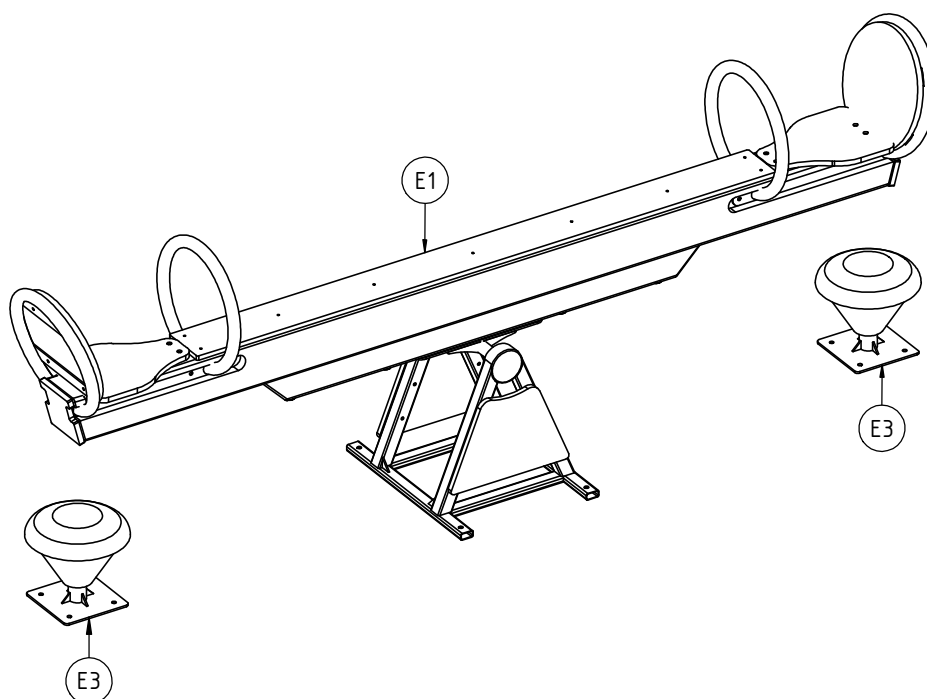
Nr	Element			Σ	Σ
1		-	S6x60	1	1
3		-	K2_d30_B	1	1
21		DIN 125	8x16	1	1
61		-	KL105		8
120		-	KL140		4
213		-	Z_NA_1	1	1
214		-	Z_NA_2	1	1

[illegible]

8013N



8013F

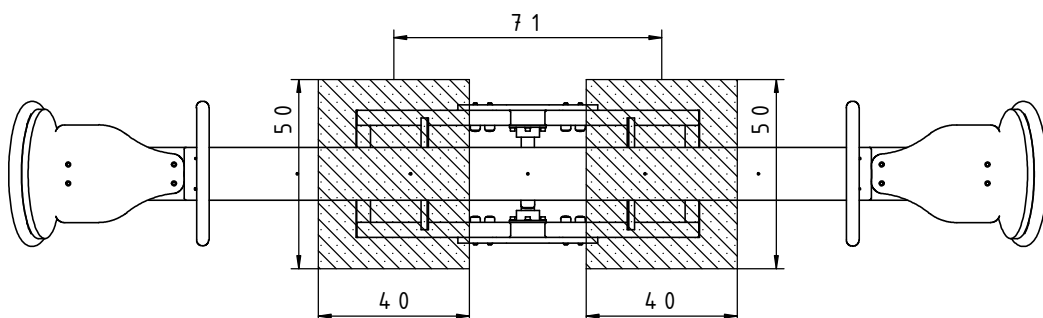
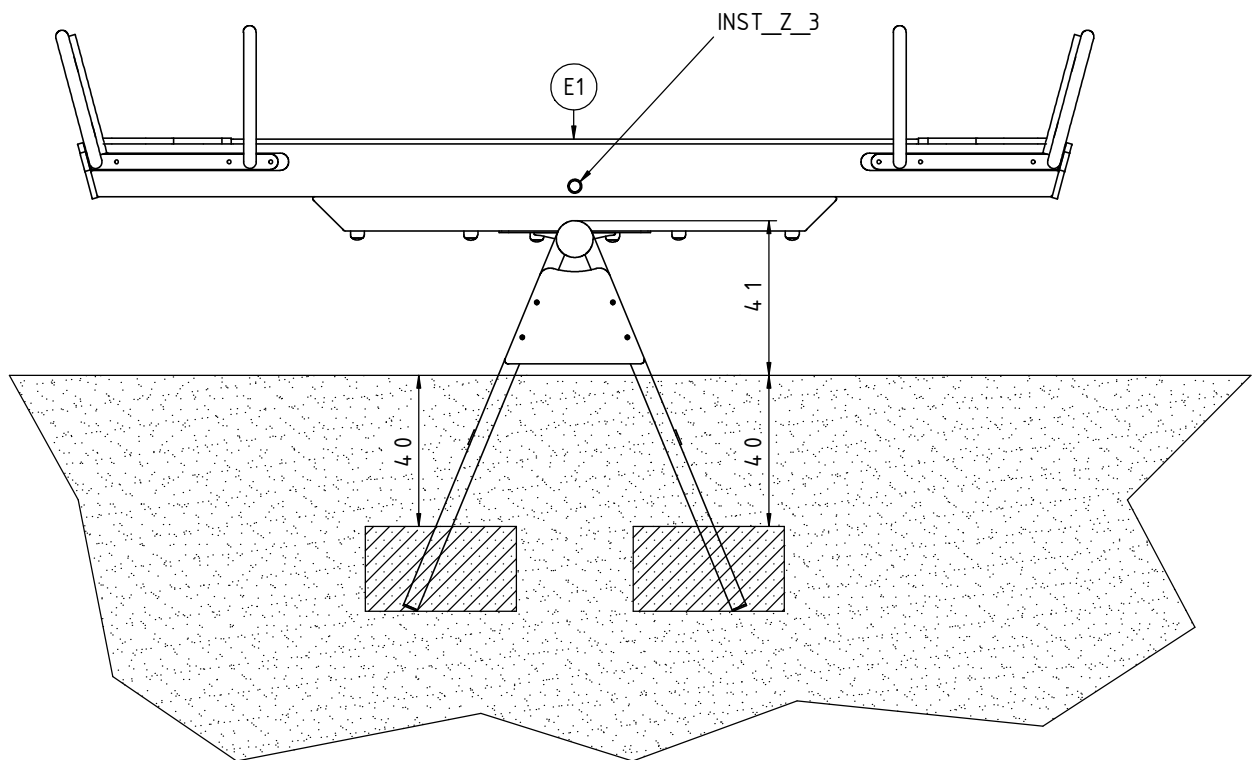
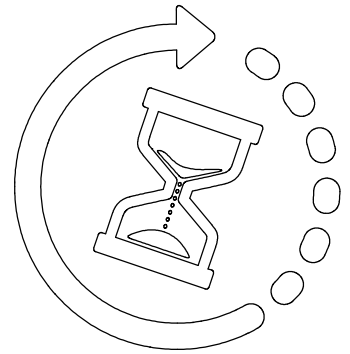
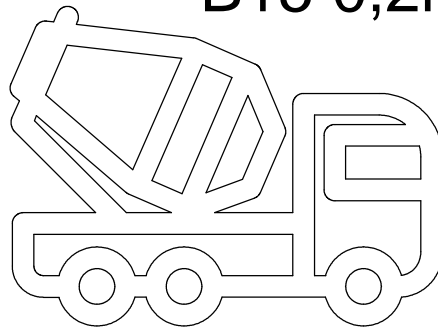
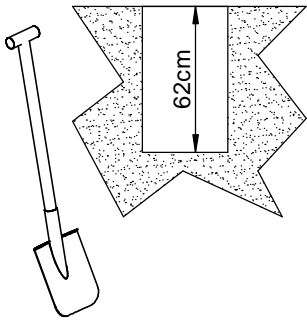


1


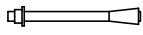
8013N

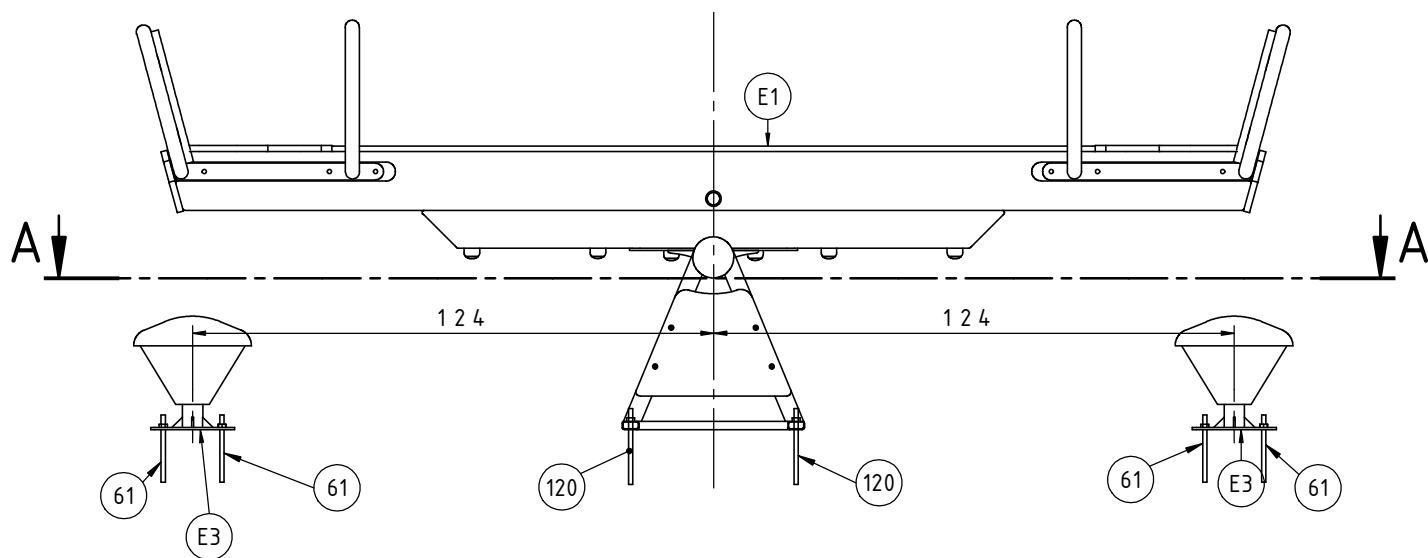
B15 0,2m<sup>3</sup>

min. 24H

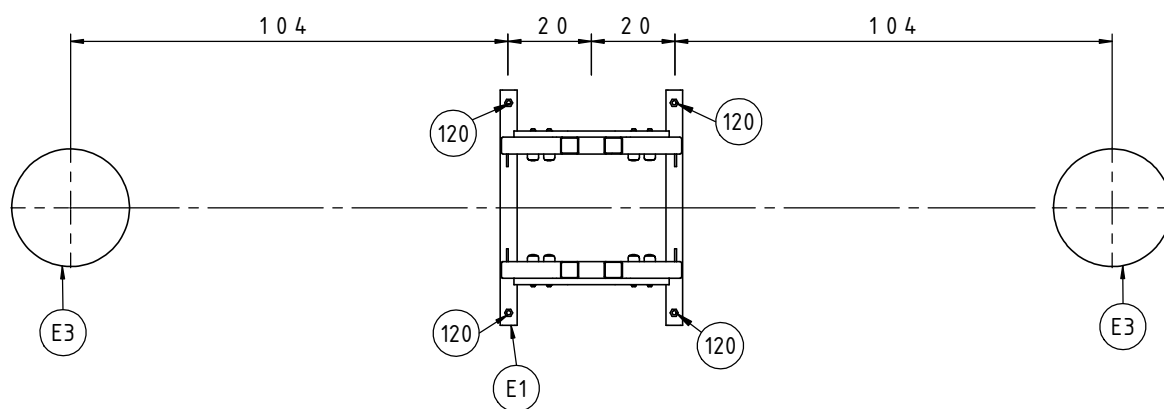


1 8013F

Nr	Σ	Element		
61	8		-	KL105
120	4		-	KL140

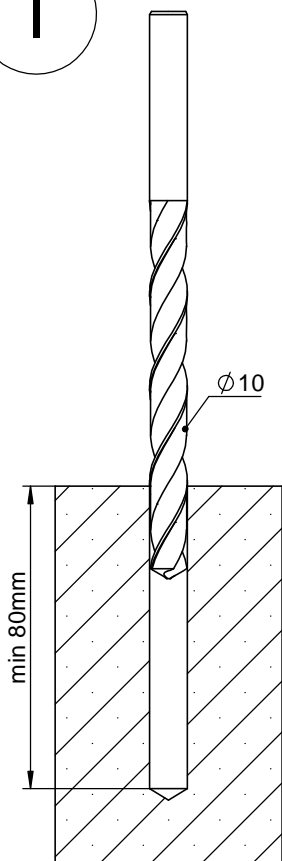


A-A (1 : 18)

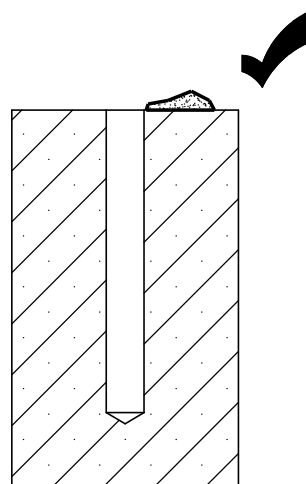
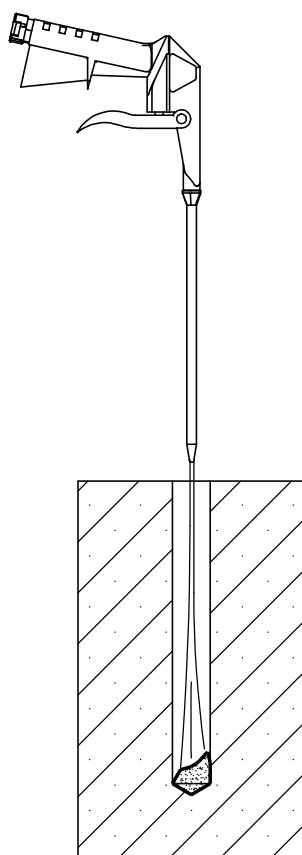


# 1 8013F

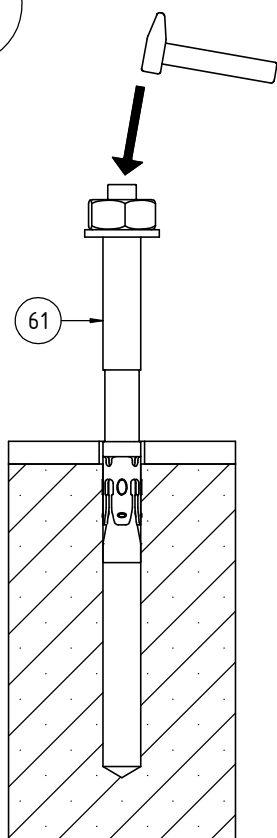
I



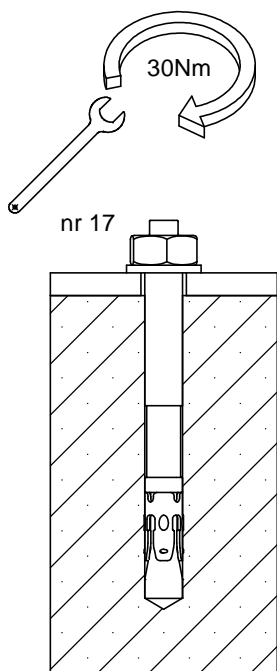
II



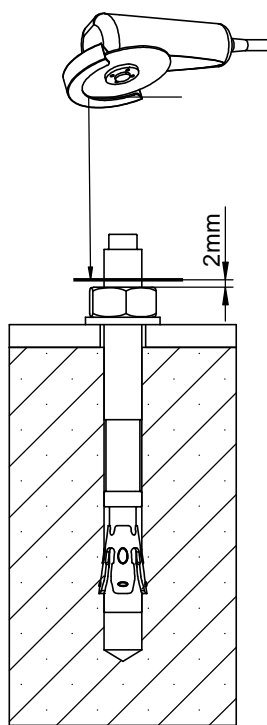
III



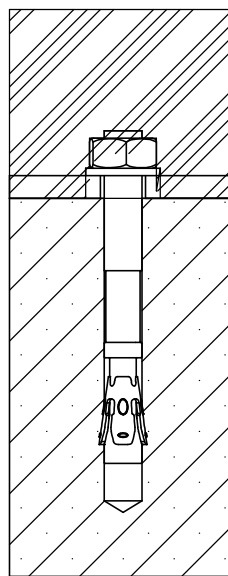
IV



V



VI





2 8013N

