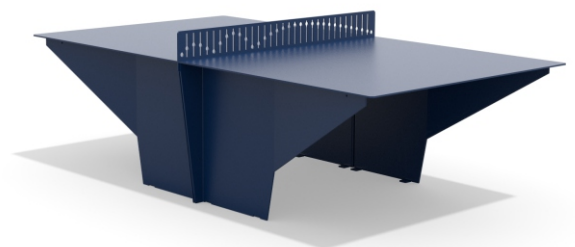




Information about the product

Dimensions	268 x 146 cm
Safety zone	568 x 446 cm
Safety zone area	23,4 m ²
Overall height	91 cm
Free fall height	-
Amount of users	4
Highest element	146 cm
Heaviest element	130 kg
Product complies with EN 16630:2015	Yes
Availability of spare parts	Yes
Age range	3-12



Functions



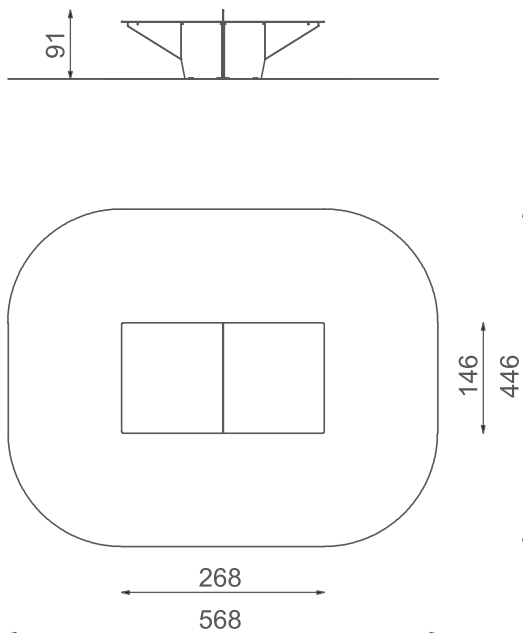
Socializing



Emotion regulation



Fitness/ Sport



1:100

Opis produktu

Tennis Table

Dimensions:

Equipment dimensions: 268 × 146 cm

Safety zone: 568 × 446 cm (m²)

Total height: 91 cm

Free-fall height: -

Materials:

Structure: The tennis table is primarily made from 8 mm thick black steel sheet. The net, which provides the effect of the ball's trajectory bouncing off the table, is also made from 8 mm thick black steel sheet. The black steel elements are cleaned by shot blasting and protected against corrosion by powder galvanising and powder coating.

All bolts exposed to weather conditions are made of stainless steel.

The equipment includes at minimum:

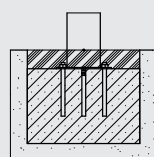
1 × tennis table

Materials



Solid construction made of black steel S235JR, cleaned in the sandblasting process. All elements made of black steel are subjected to a two-layer powder coating process, which includes the following stages: First layer – zinc-rich primer, second layer – topcoat in RAL colour.

Możliwości instalacji



na flanszy

Warranty



Lifetime

The warranty covers the durability of components made of HDPE (high-density polyethylene), as well as the structural integrity of components made of black steel that has been powder galvanised and powder coated, stainless steel, and components made of hot-dip galvanised steel.



10 years

The Guaranty covers all flaws of the elements made of HPL, HDPE, stainless steel, hot-dip galvanized steel, wooden elements (pine, spruce), revealed during usage, which arise from manufacturing reasons.



5 years

The Guaranty covers all flaws of the elements made of powder coated steel, aluminum, laminate, ropes, elements made in rotomoulding technology, elements made of polyamid, polypropylene elements, revealed during usage, which arise from manufacturing reasons.



2 years

The Guaranty covers all flaws of the elements made of rubber, moving elements (bearings, joints), electronic elements, elements made of EPDM, elements made of plywood and other not mentioned before revealed during usage, which arise from manufacturing reasons.